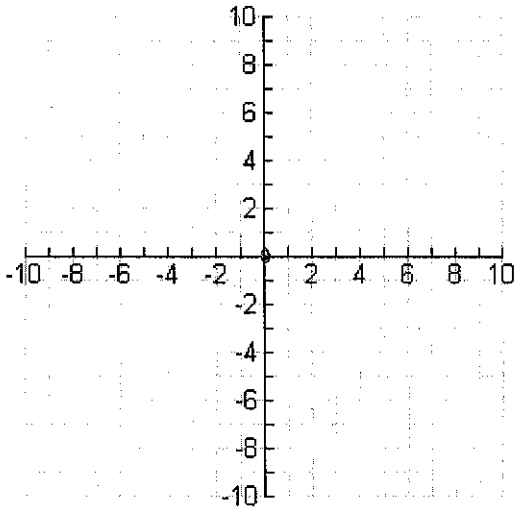
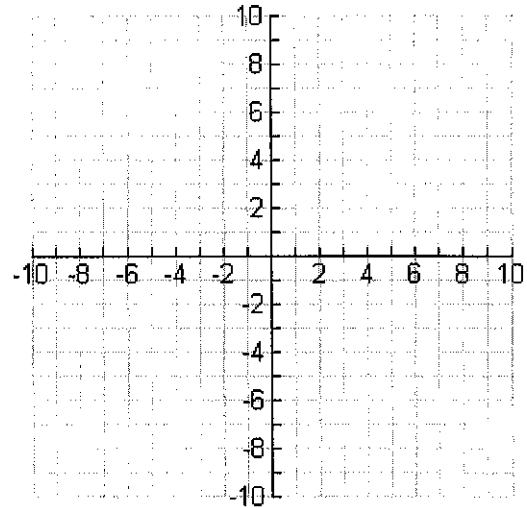


Lesson 3 Assignment All Translations

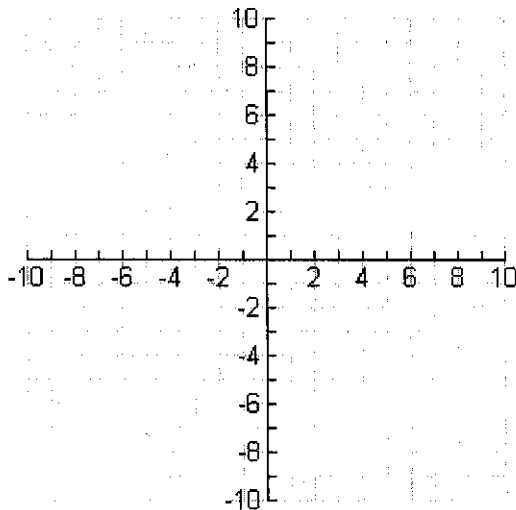
1. Graph the parent function $y = x^2$.



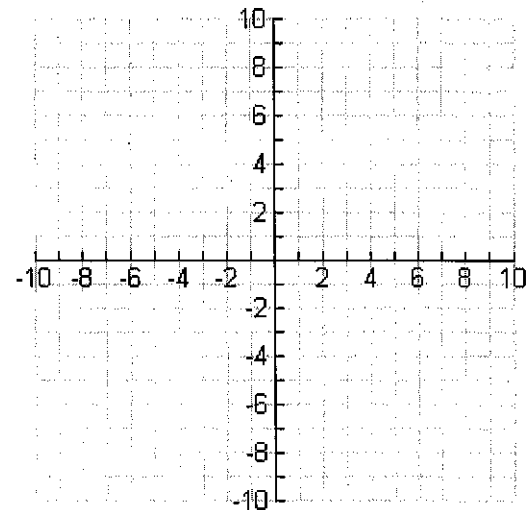
2. Graph $y = (x + 2)^2 - 6$ and describe what happens.



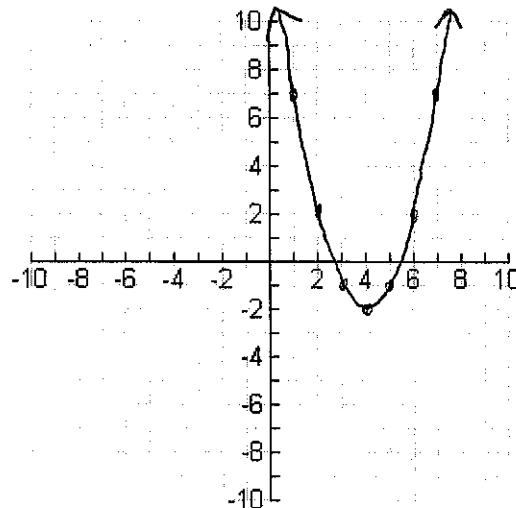
3. Graph $y = (x - 7)^2 + 3$ and describe what happens.



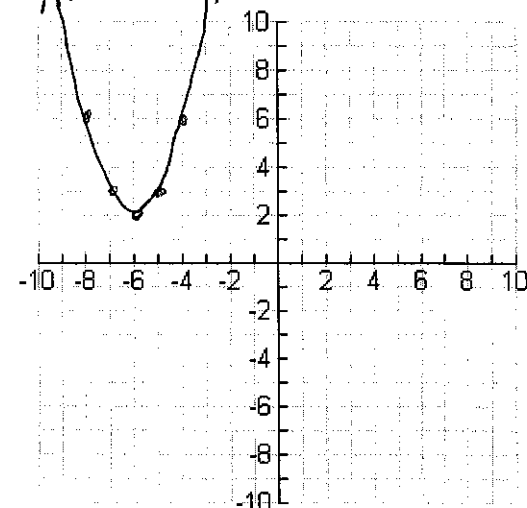
4. Graph $y = (x + 1)^2 - 1$ and describe what happens.



5. Given the graph, describe the translations.



6. Given the graph, describe the translations.



See teacher for answer key