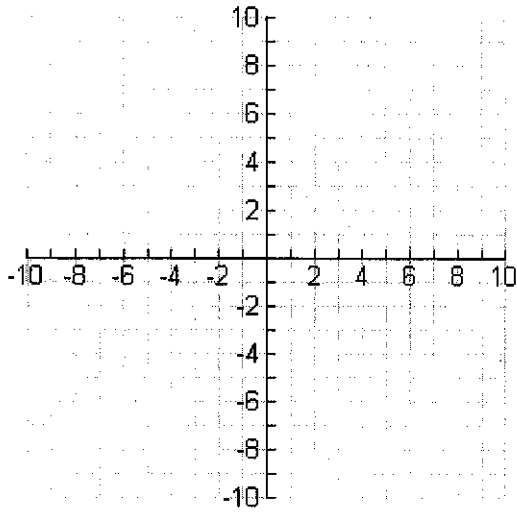
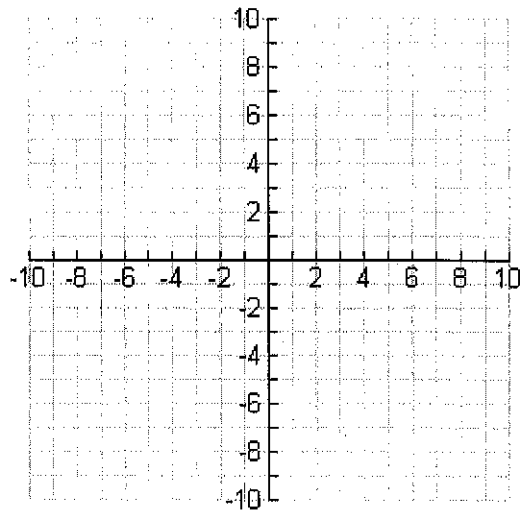


Lesson 2 Assignment Horizontal Translations

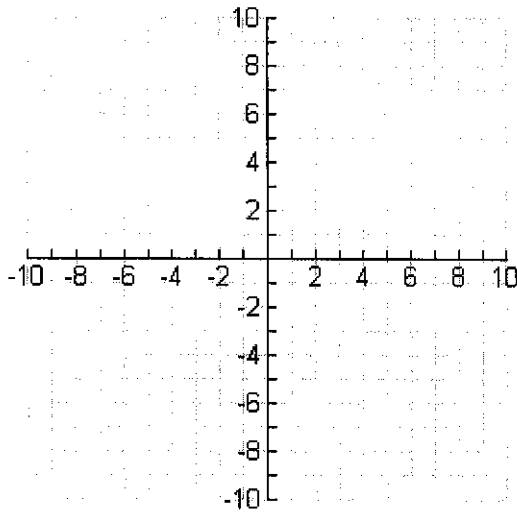
1. Graph the parent function  $y = x^2$ .



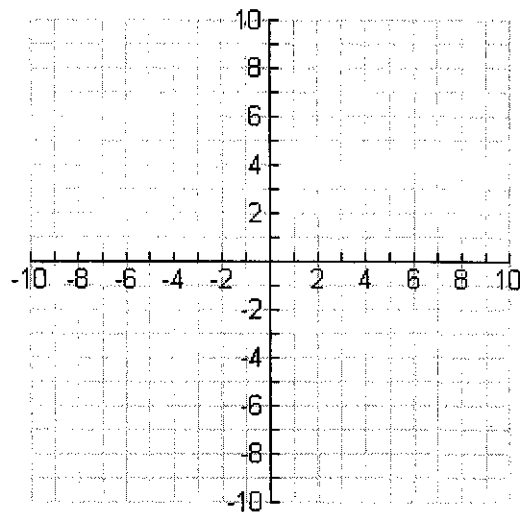
2. Graph  $y = (x + 6)^2$  and describe what happens.



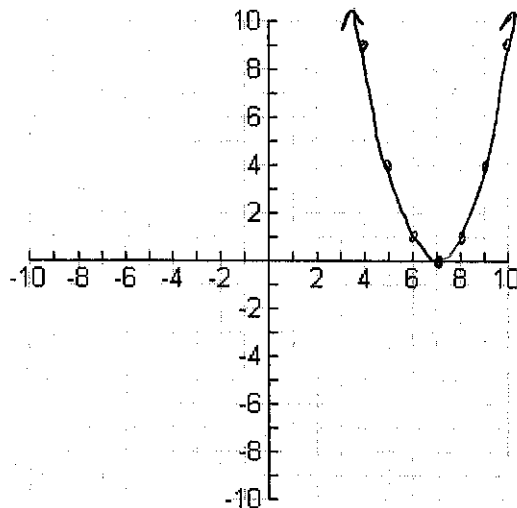
3. Graph  $y = (x - 1)^2$  and describe what happens.



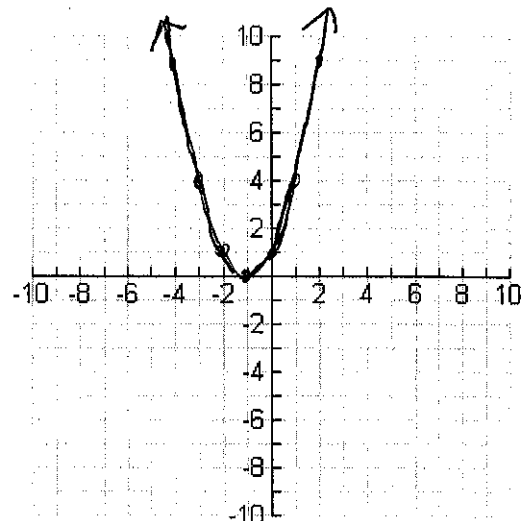
4. Graph  $y = (x + 4)^2$  and describe what happens.



5. Given the graph, describe the translations.



6. Given the graph, describe the translations.



\*\*\*See teacher for Answer Key\*\*\*