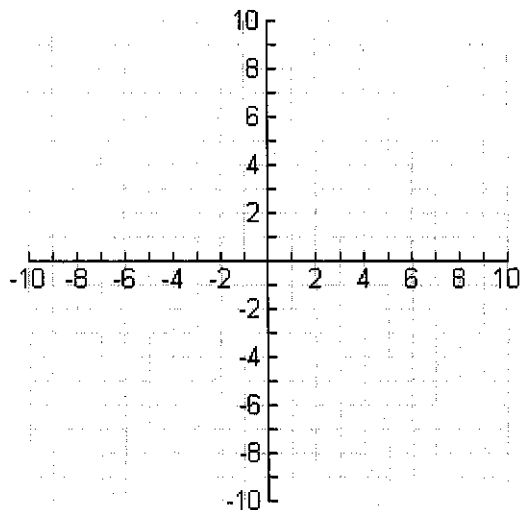
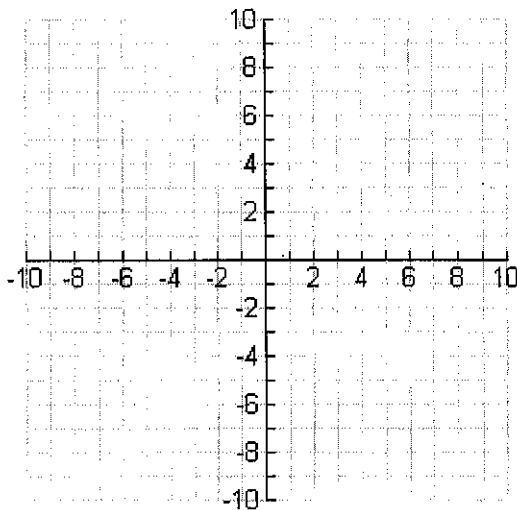


Lesson 1 Assignment Vertical Translations

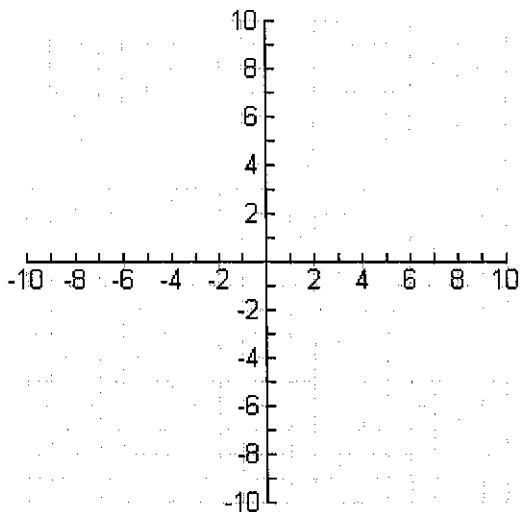
1. Graph the parent function $y = x^2$.



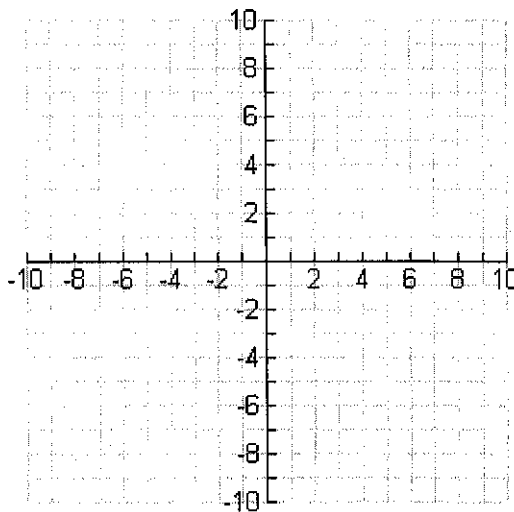
2. Graph $y = x^2 - 2$ and describe what happens.



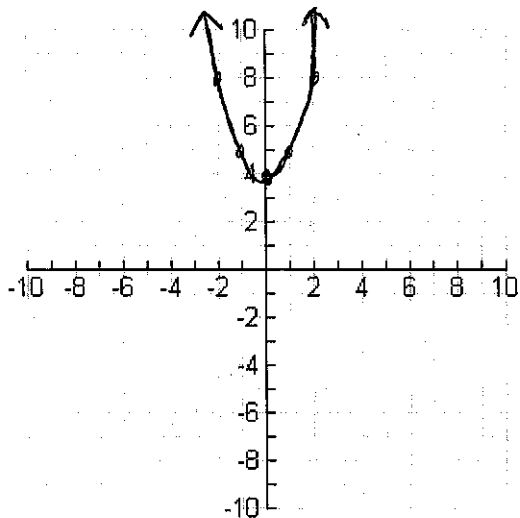
3. Graph $y = x^2 + 6$ and describe what happens.



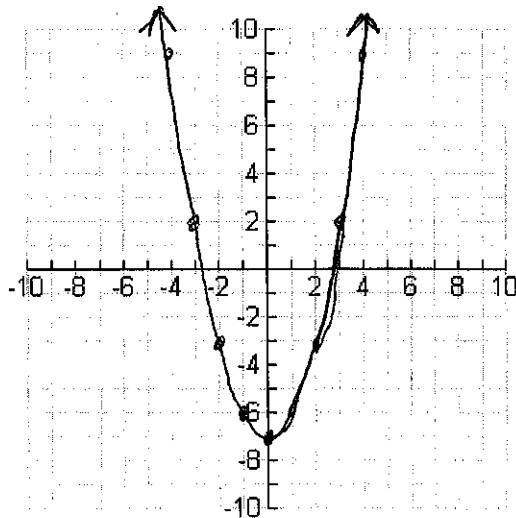
4. Graph $y = x^2 - 1$ and describe what happens.



5. Given the graph, describe the translations.



6. Given the graph, describe the translations.



See teacher for Answer Key